



Cubitt Building, 10 Gatliff Road
London SW1W

GARTON JONES.COM



Cubitt Building, 10 Gatliff Road
London, SW1W

GARTON JONES.COM

8 Gatliff Road
Grosvenor
Waterside
Chelsea
London
SW1W 8DP

Sales +44 (0) 20 7730 5007
gws@gartonjones.com
www.gartonjones.com

£440,000 Leasehold

A bright and well-presented studio apartment for sale of approx. 346 sq.ft (32.11sq.m) in Cubitt Building, part of the popular Grosvenor Waterside development in Chelsea. The apartment is open plan with a modern integrated kitchen and a bathroom suite with underfloor heating and a heated towel rail.

24 HOUR CONCIERGE, GYM & SPA. On-site Sainsbury's Local, coffee shop and private kids club. SLOANE SQUARE & VICTORIA station with Gatwick Express are within walking distance. Within close proximity to Battersea Park (just a short walk across Chelsea Bridge) and Battersea Power Station complex.

Available via Garton Jones' on-site office at Grosvenor Waterside (underneath Bramah House).

EWS1 completed
Lease: 999 years from January 2003
Service Charges: approx. £1,491.05 half yearly (2025)
Ground Rent: approx. £700.00
EPC Rating: C

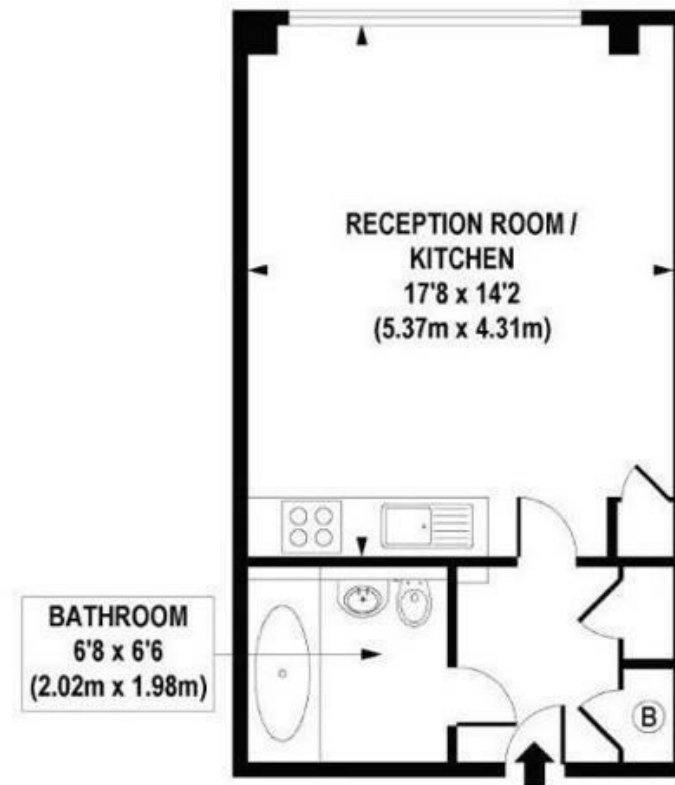
Council Tax: Westminster Council (band E)

EPC Rating: 79 (C)

EPC certificate available on request.

- 346 Sq.ft (32.11 Sq.m)
- Open Plan Living
- Kitchen with Miele Integrated Appliances
- Modern Bathroom
- 24 Hour Concierge
- Lift
- Residents' Gym & Leisure Facilities
- On Site Coffee Shop, Sainsbury's & Purple Dragon Private Kids Club
- Walking Distance To Sloane Square & Victoria Train Station
- Within Close Proximity Of Battersea Power Station & Battersea Park





APPROXIMATE GROSS INTERNAL AREA 346 sq. ft / 32.11 sq. m

